



# CANADA PRODUCT CATALOGUE 2026



[WWW.ECOSAFE.GREEN](http://WWW.ECOSAFE.GREEN)

A PROUDLY CANADIAN-OWNED AND OPERATED COMPANY



# TABLE OF CONTENTS

**ABOUT ECOSAFE ZERO WASTE 03**

**CERTIFICATIONS & STANDARDS 04**

## **PRODUCTS**

**SMALL COMPOSTABLE BAGS 05**

**MEDIUM COMPOSTABLE LINERS 06**

**LARGE COMPOSTABLE LINERS 07**

**EXTRA LARGE COMPOSTABLE LINERS 08**

**ECOSAFE BINS 09**

**ECOSTATION ADD-ONS 10**

**GROCERY AND FOOD SERVICE 11**

**RETAIL PRODUCTS 13**

**DOGGIE BAGS 14**

**CUSTOM & PRIVATE LABEL SOLUTIONS 15**

**LAWN & LEAF 16**

## **RESOURCES**

**EDUCATION & SIGNAGE 17**

**BIN & BAG REFERENCE SHEET 18**

**CONTACT INFORMATION 20**



# MAKE COMPOSTING SECOND NATURE.

**AT ECOSAFE® ZERO WASTE, WE  
BELIEVE COMPOSTING SHOULD  
BE SIMPLE, CLEAN, AND  
ACCESSIBLE FOR EVERYONE.**

For over 20 years, we've helped turn more food scraps into compost through cleaner, higher-participation diversion systems.

## OUR MISSION

Our mission is to drive organic waste separation by providing certified compostable film products and education to every individual and company that consumes, sells, or processes food.

We know that what goes in the bin matters. That's why we work alongside municipalities, haulers, composters, and businesses to reduce contamination, increase participation, and strengthen local composting systems.

See page 4 for information about our certifications and standards.

Learn more about our educational resources on page 17.

**BUILT IN CANADA.  
TRUSTED ACROSS NORTH AMERICA.**



# CERTIFICATIONS & STANDARDS

Our products are designed to meet recognized compostability standards and help support compatibility with commercial composting infrastructure across North America.



## BPI-CERTIFIED

Biodegradable Products Institute

Meets ASTM D6400 compostability standards with restrictions on PFAS (per- and polyfluoroalkyl substances) in certified products.

ASTM Compliant



## CMA-IAW APPROVED

Compost Manufacturing Alliance

Tested and accepted across all major commercial composting processing technologies.

ASP

In-Vessel

Windrow

## WHY IT MATTERS

Coverage  
**NORTH-AMERICA WIDE**

PFAS Restricted  
**ALL PRODUCTS**

Processing Methods  
**3 TECHNOLOGIES**



## SMALL COMPOSTABLE BAGS



### 16 X 17" COMPOSTABLE BAG/LINER

HB1617-6  
Fits EcoSafe Kitchen Bin



### 18.25 / 25" COMPOSTABLE BAG/LINER

HB1825-6  
Fits 5-Gallon pails



### COMPOSTABLE BAG DISPENSER - MULTI-RES

MFRD-1



### 16 X 17" COMPOSTABLE BAG/LINER - MULTI-RES

HR1617-6  
Fits MFRD-1 Dispenser



### CLUB PACK DISPENSER

CPD-1



### COMPOSTABLE SMALL FOOD SCRAPS BAG - CLUB PACK

CP1617-6  
Fits CPD-1 Dispenser

PRODUCT CODE	DESCRIPTION	SIZE (IN)	CAPACITY (GAL/L)	MIL	BAGS/ UNIT	UNITS/ CASE	BAGS/ CASE
HB1617-6	16x17" Compostable Bag/Liner	16x17	2.5/9.5	0.6	30/Roll	24	720
HB1617-6	16x17" Compostable Bag/Liner - Multi-Res®	16x17	2.5/9.5	0.6	325/Roll	4	1300
CP1617-6	Compostable Small Food Scraps Bag - Club Pack	16x17	2.5/9.5	0.6	90/Box	10	900
HB1825-6	18.25x25" Compostable Bag/Liner	18.25x25	7/26	0.6	12/Roll	40	480
MFRD-1	Compostable Bag Dispenser - Multi-Res®	8x8x8	n/a	n/a	1	n/a	n/a
CPD-1	Club Pack Dispenser	11x5x3	n/a	n/a	1	n/a	n/a



# MEDIUM COMPOSTABLE LINERS



**21 X 25"  
COMPOSTABLE BAG/LINER**

HB2125-6  
Fits EcoCaddy Bin



**28 X 44"  
COMPOSTABLE BAG/LINER**

HB2844-8  
Fits the Curbside Cart and EcoStation Bin




**20 X 22"  
COMPOSTABLE BAG/LINER**

HB2022-6



**24 X 32"  
COMPOSTABLE BAG/LINER**

HB2432-6

PRODUCT CODE	DESCRIPTION	SIZE (IN)	CAPACITY (GAL/L)	MIL	BAGS/ ROLL	UNITS/ CASE	BAGS/ CASE
HB2022-6	20x22" Compostable Bag/Liner	20x22	7/26	0.6	25	24	600
HB2125-6	21x25" Compostable Bag/Liner	21x25	8/30	0.6	12	40	480
HB2432-6	24x32" Compostable Bag/Liner	24x32	13/49	0.6	12	24	288
HB2636-8	26x36" Compostable Bag/Liner	26x36	20/76	0.8	15	11	165
HB2844-8	28x44" Compostable Bag/Liner	28x44	23/87	0.8	15	9	135

## LARGE COMPOSTABLE LINERS



### 30 X 39" COMPOSTABLE BAG/LINER

HB3039-8 | HB3039-11

Fits Rubbermaid  
Vented Slim Jim 16G



### 35 X 50" COMPOSTABLE BAG/LINER

HB3550-85

Fits Rubbermaid  
Vented Brute 44G



### 30 X 42" COMPOSTABLE BAG/LINER

HB3042-8



### 33 X 39" COMPOSTABLE BAG/LINER

HB3339-85



### 33 X 48" COMPOSTABLE BAG/LINER

HB3348-85

PRODUCT CODE	DESCRIPTION	SIZE (IN)	CAPACITY (GAL/L)	MIL	BAGS/ROLL	UNITS/CASE	BAGS/CASE
HB3039-8	30x39" Compostable Bag/Liner	30x39	30/114	0.8	15	9	135
HB3039-11	30x39" Compostable Bag/Liner - Extra Strong	30x39	30/114	1.1	12	8	96
HB3042-8	30x42" Compostable Bag/Liner	30x42	35/132	0.85	15	9	135
HB3339-85	33x39" Compostable Bag/Liner	33x39	35/132	0.85	15	9	135
HB3348-85	33x48" Compostable Bag/Liner	33x48	39/148	0.85	15	6	90
HB3550-85	35x50" Compostable Bag/Liner	35x50	45/170	0.85	15	6	90



## EXTRA LARGE COMPOSTABLE LINERS



### 39 X 55" COMPOSTABLE BAG/LINER

HB3955-85  
Fits 48 Gallon Toter



### 48 X 60" COMPOSTABLE BAG/LINER

HB4860-85  
Fits 64 Gallon Toter



### 42 X 48" COMPOSTABLE BAG/LINER

HB4248-85



### 44 X 60" COMPOSTABLE BAG/LINER

HB4460-85



### 54 X 60" COMPOSTABLE BAG/LINER

HB5460-85



### 82 X 70" COMPOSTABLE BAG/LINER

HB8270-12

PRODUCT CODE	DESCRIPTION	SIZE (IN)	CAPACITY (GAL/L)	MIL	BAGS/ ROLL	UNITS/ CASE	BAGS/ CASE
HB3955-85	39x55" Compostable Bag/Liner	39x55	48/182	0.85	10	8	80
HB4248-85	42x48" Compostable Bag/Liner	42x48	55/208	0.85	10	8	80
HB4460-85	44x60" Compostable Bag/Liner	44x60	60/227	0.85	10	6	60
HB4860-85	48x60" Compostable Bag/Liner	48x60	64/242	0.85	10	6	60
HB5460-85	54x60" Compostable Bag/Liner	54x60	90/341	0.85	10	6	60
HB8270-12	82x70" Compostable Bag/Liner	82x70	3/4 Yd	1.2	n/a	n/a	25



## ECOSAFE BINS



### ECOSAFE KITCHEN BIN

KCGRN-2  
Fits 16x17 Bag



### ECOCADDY BIN - MEDIUM

ECGRN  
Fits 21x25 Bag



### CURBSIDE CART TALL WITH ANIMAL LATCH

CCGRN  
Fits 28x44 Bag



### ECOSTATION

ESTN23  
Fits 28x44 bag  
See page 10 for EcoStation add-ons

PRODUCT CODE	DESCRIPTION	SIZE (IN)	CAPACITY (GAL/L)	COLOURS	MIN. ORDER	BINS/PALLET
KCGRN-2	EcoSafe Kitchen Bin	11x9x10	2.12/8	Green, Black	18	432
ECGRN	EcoCaddy Bin	16x13x16	6/23	Green, Black	6	96
CCGRN	Curbside Cart - Tall - with Animal Latch	16x21x31	13/49	Green	2	78
ESTN23	EcoStation Bin (Single Bin)	11x21x30	23/87	Grey	1	96

## ECOSTATION ADD-ONS



### ECOSTATION BIN (SINGLE BIN)

ESTN23



### ECOSTATION - SIGN FRAME

ESTN-SF

Clear Signs.  
Cleaner Compost.  
Free Signage Available.



### ECOSTATION - LIFT LID

ESTN-LIFT



### ECOSTATION - MIXED RECYCLE LID

ESTN-MR



### ECOSTATION - REFUNDABLES LID

ESTN-CIRCLE



### ECOSTATION - OPEN LID

ESTN-OPEN

PRODUCT CODE	DESCRIPTION	SIZE (IN)	CAPACITY (GAL/L)	COLOURS	MIN. ORDER	BINS/PALLET
ESTN23	EcoStation Bin (Single Bin)	11x21x30	23/87	Grey	1	96
ESTN-SF	EcoStation - Sign Frame	12x9x1		Grey, Black, Blue, Green	Sold individually	
ESTN-LIFT	EcoStation - Lift Lid	21x12x4		Green, Blue, Black, Yellow, Red, Grey	Sold individually	
ESTN-MR	EcoStation - Mixed Recycle Lid	21x12x3		Green, Blue, Black, Yellow, Red, Grey	Sold individually	
ESTN-CIRCLE	EcoStation - Circle Lid	21x12x3		Green, Blue, Black, Yellow, Red, Grey	Sold individually	
ESTN-OPEN	EcoStation - Open Lid	21x12x3		Green, Blue, Black, Yellow, Red, Grey	Sold individually	



## GROCERY AND FOOD SERVICE



### STANDARD SIZE COMPOSTABLE CHECKOUT BAG

TB1920-85 and TB1920-10  
Fits EcoSafe Kitchen Bin



### 12 X 19" COMPOSTABLE PRODUCE BAG

PCK1219-6



### 16 X 19" COMPOSTABLE PRODUCE BAG

PCK1619-6  
Fits EcoSafe Kitchen Bin

PRODUCT CODE	DESCRIPTION	SIZE (IN)	CAPACITY (LBS)	MIL	BAGS/ PACK	PACKS/ CASE	BAGS/ CASE
TB1620-85	Compostable Checkout Bag - Small (Special Order)	10x20x6.5	15	0.85	50	10	500
TB1920-85	Compostable Checkout Bag - Standard Size	12x20x7	15	0.85	50	10	500
TB1920-10	Compostable Checkout Bag - Standard Size (Extra Strong)	12x20x7	20	1.0	50	10	500

PRODUCT CODE	DESCRIPTION	SIZE (IN)	CAPACITY (GAL/L)	BAGS/ ROLL	ROLLS/ PACK	BAGS/ CASE
PCK1219-6	12x19" Compostable Produce Bulk Bag - Medium	12x19	0.6	400	4	1600
PCK1619-6	16x19" Compostable Produce Bulk Bag - Large	16x19	0.6	275	10	1100

# GROCERY AND FOOD SERVICE



## COMPOSTABLE FOOD PREP GLOVES

Available in three sizes



POWDER FREE FIT



FOOD GRADE CERTIFIED

PRODUCT CODE	DESCRIPTION	PALM WIDTH (IN)	GLOVES/ BOX	BOXES/ PACK	GLOVES/ CASE
CBG100	Compostable Food Prep Glove - Small	3.25	200	4	800
CBG200	Compostable Food Prep Glove - Medium	3.75	200	4	800
CBG300	Compostable Food Prep Glove - Large	4.25	200	4	800

# RETAIL PRODUCTS



## COMPOSTABLE FOOD PREP GLOVE - SMALL

CBG100



## COMPOSTABLE FOOD SCRAPS SCRAP BAG - CLUB PACK

CP1617-6



## COMPOSTABLE FOOD PREP GLOVE - MEDIUM

CBG200



## COMPOSTABLE FOOD SCRAPS BAG - SMALL WITH HANDLES

CBR1617-6



## COMPOSTABLE FOOD PREP GLOVE - LARGE

CBG300



## COMPOSTABLE FOOD SCRAPS BAG - TALL WITH HANDLES

CBR2435-6

PRODUCT CODE	DESCRIPTION	PALM WIDTH (IN)	GLOVES/ BOX	BOXES/ PACK	GLOVES/ CASE
CBG100	Compostable Food Prep Glove - Small	3.25	200	4	800
CBG200	Compostable Food Prep Glove - Medium	3.75	200	4	800
CBG300	Compostable Food Prep Glove - Large	4.25	200	4	800

PRODUCT CODE	DESCRIPTION	SIZE (IN)	CAPACITY (GAL/L)	MIL	BAGS/ UNIT	UNITS/ CASE	BAGS/ CASE
CP1617-6	Compostable Food Scraps Scrap Bag - Club Pack	16x17	2.5/9.5	0.6	90	10	900
CBR1617-6	Compostable Food Scraps Bag - Small	16x17	1.8/9.5	0.6	30	24	720
CBR2435-6	Compostable Food Scraps Bag - Tall	24x35	13/49	0.6	12	15	180



## COMPOSTABLE DOGGIE BAGS



### GREAT FOR MUNICIPAL PARKS OR MULTI-RESIDENTIAL BUILDINGS

- Rugged powder-coated steel built to outlast the elements
- Lockable design keeps supplies secure and theft-free
- Massive 700 bag capacity with fewer refills and less hassle



### COMPOSTABLE DOGGIE BAG DISPENSER

DBD200

Bag dispenser for  
CBD4200



### COMPOSTABLE DOGGIE BAG - COMMERCIAL

CBD4200

Rolls ONLY fit DBD200  
Proprietary Dispenser



### COMPOSTABLE DOGGIE BAG - LEASH DISPENSER ROLL

CBD864-18



### COMPOSTABLE DOGGIE BAG - ECONOMY ROLL

CBD1440-120

PRODUCT CODE	DESCRIPTION	SIZE (IN)	CAPACITY (GAL/L)	MIL	BAGS/ ROLL	ROLLS/ CASE	BAGS/ CASE
DBD200	Compostable Doggie Bag Dispenser	13x8x8			N/A	N/A	Sold separately
CBD4200	Compostable Doggie Bag - Commercial	8x13	20	0.6	700	6	4200
CBD864-18	Compostable Doggie Bag - Leash Dispenser Roll	9x13	15	0.6	18	48	864
CBD1440-120	Compostable Doggie Bag - Economy Roll	8x13	15	0.6	120	12	1440



## CUSTOM PRODUCTS & PRIVATE LABELS

Every organics program, business, and brand has unique needs. That's why we offer custom compostable products tailored to your operations, branding, and sustainability goals.

From custom-printed bags and liners to private-label retail programs, we partner with distributors, municipalities, retailers, institutions, restaurants, and businesses to deliver solutions that work in real-world composting systems."

### CUSTOMIZATION OPTIONS

- Custom printed bags & liners
- Private label retail packaging
- Custom sizing & specifications
- Municipal or program branding
- Educational messaging & print design
- Large-scale commercial solutions



### BUILT FOR YOUR BUSINESS

Whether you're promoting a sustainability initiative, launching a takeout program, or creating a custom retail offering, EcoSafe can help. Our custom-printed compostable bags have been used by restaurants, grocery stores, and organizations to reinforce sustainability messaging while providing customers with a durable bag that can be reused in the green bin for food scraps.

**TALK TO OUR SALES TEAM TODAY FOR MORE INFORMATION.**



## LAWN & LEAF



### COMPOSTABLE LAWN & LEAF BAG

CNW-LT3936

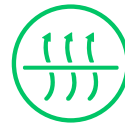


### COMPOSTABLE LAWN & LEAF TARP

CNW-LT7272



**MADE FROM 100%  
ANNUALLY  
RENEWABLE MATERIALS**



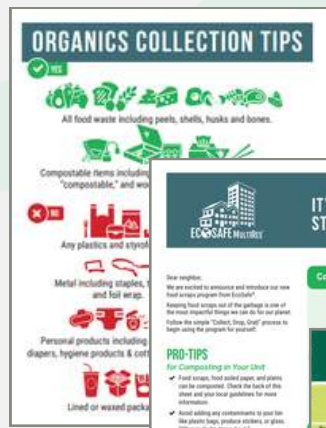
**BREATHABLE TO DRY OUT  
CONTENTS AND REMAIN  
STRONG**

PRODUCT CODE	DESCRIPTION	SIZE (IN)	BAGS/ CASE
CNW-LT7272	Compostable Lawn & Leaf Tarp	72x72	12
CNW-LB3936	Compostable Lawn & Leaf Bag	39x36	40



# EDUCATION & SIGNAGE

CLEAR SIGNAGE AND EDUCATION ARE ESSENTIAL TO EVERY SUCCESSFUL COMPOSTING PROGRAM.



EcoSafe offers step-by-step guides to set up a successful compost stream in your building.

**DOWNLOAD YOURS FOR FREE TODAY.**



# BIN & BAG CROSS REFERENCE GUIDE

OPTIMIZE CAPACITY WITH THE CORRECT BAG SIZE.

BIN BRAND	SIZE		VENDOR	RECOMMENDED ECOSAFE BAG/LINER		
	US Gal	Liters		Description	SKU #	EcoSafe SKU#
<b>ECOSAFE ZERO WASTE INC.</b>						
EcoSafe Kitchen Bin	2.5	9.46	Kitchen Bin	KCGRN-2	HB1617-6	16x17"
EcoCaddy Bin	6.0	23	Small Curbside	ECGRN	HB2125-6	21x25"
Curbside Cart w/ Animal Latch	13.0	49	Large Curbside	CCGRN	HB2844-8	28x44"
EcoStation	23	87	"Slim Jim Style"	ESTN23	HB2844-8	28x44"
<b>IPL</b>						
	1.5	7	Kitchen Catcher	60224	HB1617-6	16x17"
	12	45	12G	60225	HB2432-6	24x32"
<b>BUSCH BIN SYSTEMS</b>						
	2.25	8.5	Kitchen Composter	102826	HB1617-6	16x17"
	10	37.85	Billi Box - Organics	100862	HB2432-6	24x32"
	23	87	Waste Watchers	103736	HB2844-8	28x44"
	32	121	Waste Watchers	103860	HB3042-85	30x42"
<b>RUBBERMAID COMMERCIAL</b>						
(Brute Round®)	10	44	Vented Brute 10G	1926827	HB2432-6	24x32"
	20	88	Vented Brute 20G	1779734	HB3039-8	30x39"
	32	140	Vented Brute 32G	1867531	HB3348-85	33x48"
	44	194	Vented Brute 44G	FG264360	HB3550-8	35x50"
	55	242	Vented Brute 55G	1779739	HB4248-85	42x48"
(Slim Jim®)	16	72.74	Vented Slim Jim 16G	1955959	HB3039-85	30x39"
	23	87.1	Vented Slim Jim 23G	FG354060	HB3042-85	30x42"
No Handles	23	87.1	Slim Jim 23G - No Handles	3540 - DIS	HB2844-8	28x44"
Handles	23	87.1	Slim Jim 23G - Handles	3541 - DIS	HB3042-85	30x42"
(Deskside)	7	26	Waste Basket	FG295606GRN	HB2125-6	21x25"
<b>ORBIS</b>						
	2.5	9.46	Kitchen Collector	NP390	HB1617-6	16x17"
	12	8.5	Orbis 12G Green Bin	NPL 280	HB2432-6	24x32"
	12	8.5	Orbis 12G Green Bin2	NPL 280A	HB2636-8	26x36"
	21	8.5	Green Bin+	NPL285	HB3042-85	30x42"



# CART & BAG CROSS REFERENCE GUIDE

**SIZED TO FIT. BUILT TO PERFORM.**

CART BRAND	SIZE		VENDOR	RECOMMENDED ECOSAFE BAG/LINER		
	US Gal	Liters		Description	SKU #	EcoSafe SKU#
<b>CASCADE</b>						
	32	121	Sterling	Sterling 32	HB3550-85	35x50"
	64	240	Sterling	Sterling 64	HB4460-85	44x60"
	96	360	Sterling	Sterling 96	HB5460-85	54x60"
<b>IPL</b>						
	32	120	Mastercart	60211	HB3550-85	35x50"
	64	240	Mastercart	60216	HB4460-85	44x60"
	95	360	Mastercart	60269	HB5460-85	54x60"
<b>REHRIG</b>						
	28	100	EnviroGuard	ROC-100L	HB3039-8	30x39"
	32	120	Husky Lite Roll-Out	ROC-32MB	HB3550-85	35x50"
	35	132	Metal Bar Roll-Out	ROC-35MB	HB3955-85	39x55"
	65	245	Nestable Bar Roll-Out	ROC-65-MB	HB4860-85	48x60"
	95	360	Nestable Bar Roll-Out	ROC-95NB	HB5460-86	54x60"
<b>SCHAEFER - AMERICAN LIFT</b>						
	35	130	USD 35B	USD35B.100	HB3955-85	39x55"
	65	245	USD 65B	USD65B.700	HB4860-85	48x60"
	95	360	USD 95B	USD95B.500	HB5460-85	54x60"
<b>TOTER</b>						
	24	91	ONA-24	10456	HB3348-85	33x48"
	32	120	EVR-1	76532	HB3550-85	35x50"
	48	180	EVR-1	79248	HB3955-85	39x55"
	64	240	EVR-1	79264	HB4860-85	48x60"
	96	360	EVR-1	79296	HB5460-86	54x60"

# CONTACT US TODAY

**CARA ANDERSON**  
**DIRECTOR OF SALES - CANADA**

✉ [cara@ecosafezerowaste.com](mailto:cara@ecosafezerowaste.com)

☎ 1-587-839-7173

## STAY CONNECTED

📷 @ecosafezw

🌐 @EcoSafe

📺 @ecosafezerowaste

## ORDER DESK

🌐 [www.ecosafe.green](http://www.ecosafe.green)

✉ [info@ecosafezerowaste.com](mailto:info@ecosafezerowaste.com)

☎ 1-604-560-5133

📍 Unit 103- 3475 194th Street,  
Surrey, BC V3S 0L5

## LET'S START COMPOSTING

Visit our website, contact your sales representative, or call our order desk to place an order. We'll confirm the details, arrange delivery, and get your supplies on the way.



# MAKE COMPOSTING SECOND NATURE.